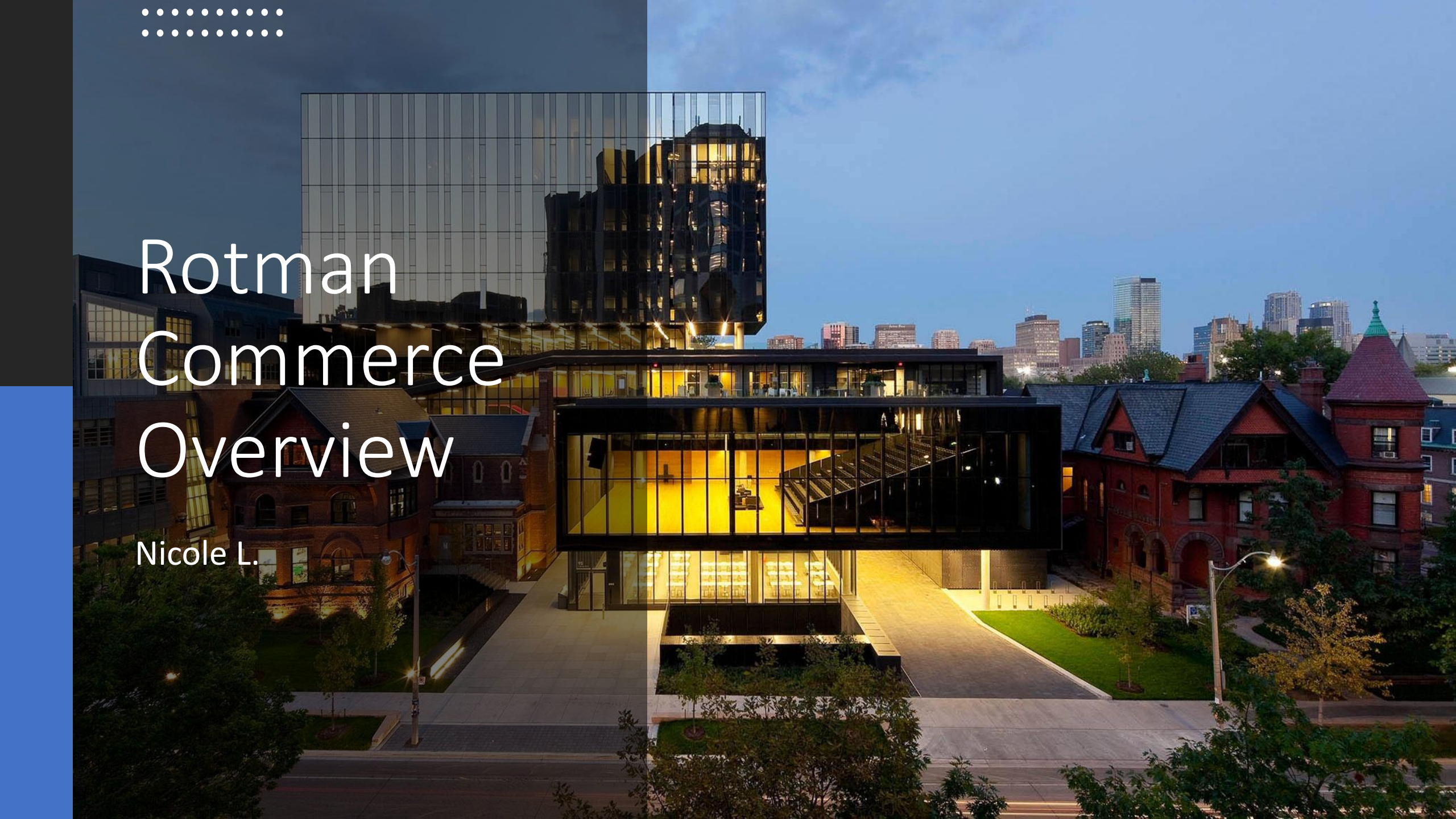


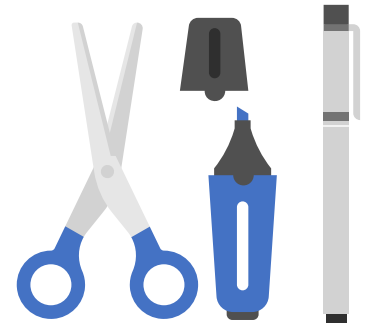


# Rotman Commerce Overview

Nicole L.



# Agenda



1

Program Overview

3

Year 2-4

2

Year 1

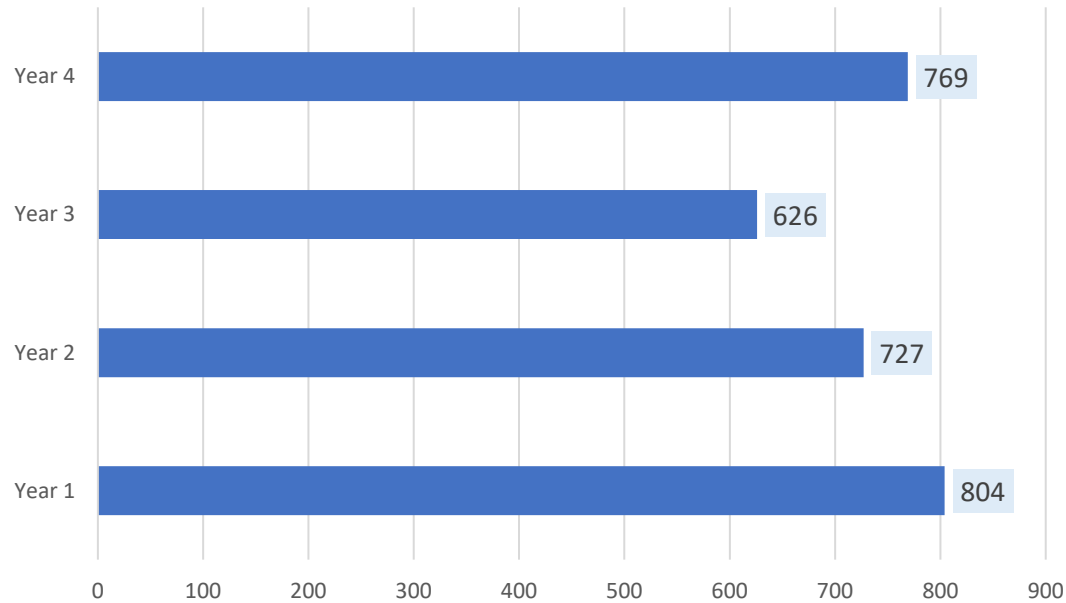
4

Q&A

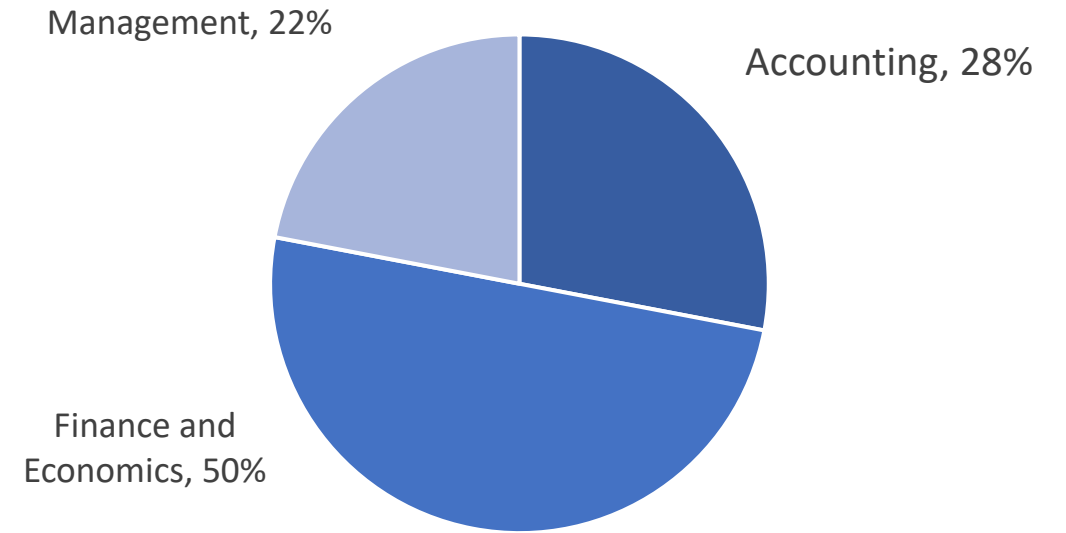


# Demographics

## Total Number of Students



## Rotman Student Distribution



57% students identified as females



47 countries represented in the class of 2022



90% of students employed within first 9 months of graduation



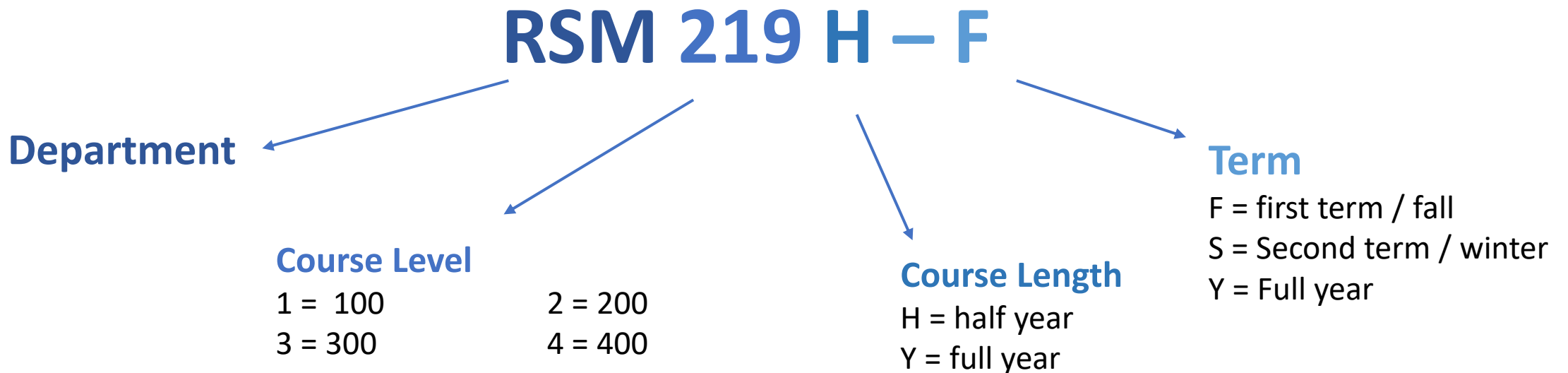
# First Year Program Overview

## Required courses

- RSM100H Introduction to Management
- ECO101H Principles of Microeconomics
- ECO102H Principles of Macroeconomics
- MAT133Y Calculus and Linear Algebra

## Recommended courses

- RSM219H Introduction to Financial Accounting
- RSM230H Financial Markets
- RSM250H Principles of Marketing





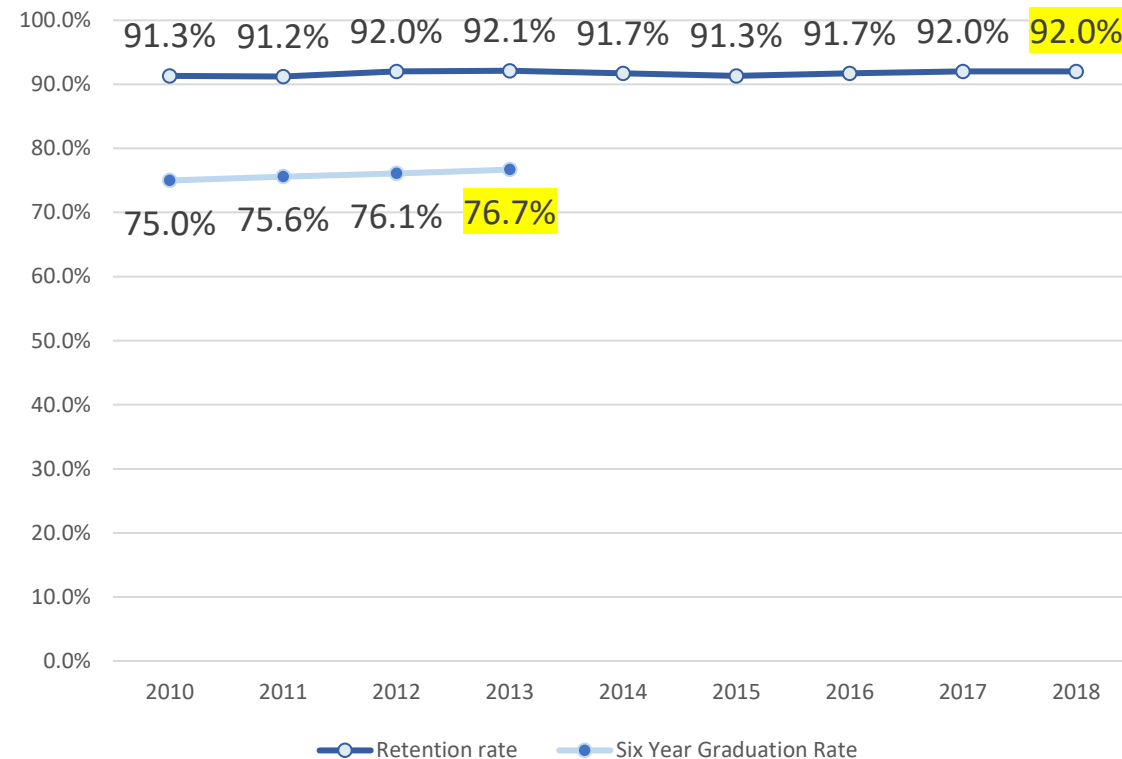
# Grade Requirements and Retention Rate



## Required courses

- RSM100H Introduction to Management - **67%**
- ECO101H Principles of Microeconomics – **63%**
- ECO102H Principles of Macroeconomics – **63%**
- MAT133Y Calculus and Linear Algebra – **63%**
- \* Accumulated a minimum of 4.0 Credits

## First Year Retention Rate, Six-Year Graduation Rate

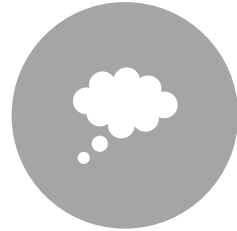


**90%** of the 2019 first-year Rotman Commerce students successfully completed the guaranteed admission requirements to progress to their second year.

# Breadth Requirements



CREATIVE AND  
CULTURAL  
REPRESENTATIONS



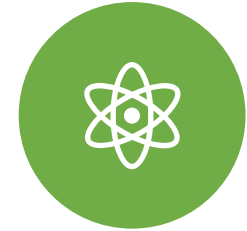
THOUGHT, BELIEF,  
AND BEHAVIOUR



SOCIETY AND ITS  
INSTITUTIONS



LIVING THINGS AND  
THEIR ENVIRONMENT



THE PHYSICAL AND  
MATHEMATICAL  
UNIVERSES

**The Breadth Requirement can be completed in one of two ways:**

1. at least 1.0 credit in each of 4 of the 5 categories
2. at least 1.0 credit in each of any 3 of the 5 categories, and at least 0.5 credit in each of the other 2 categories

Your  
Schedule Will  
Look Like This



	Monday	Tuesday	Wednesday	Thursday	Friday
9:00	MAT133Y1 Y TUT 0103 9:00 - 10:00 BL 114				
10:00		ECO101H1 F TUT 0801 10:00 - 11:00 UC 244		FAH195H1 F LEC 0101 10:00 - 12:00 WI 2006	
11:00	ECO101H1 F LEC 0201 11:00 - 12:00 BT 101	RSM100H1 F LEC 0101 11:00 - 1:00 BT 101	ECO101H1 F LEC 0201 11:00 - 12:00 BT 101		ECO101H1 F LEC 0201 11:00 - 12:00 BT 101
12:00					
1:00					
2:00			RSM250H1 F LEC 0701 2:00 - 4:00 MP 137		
3:00					
4:00					
5:00					
6:00	MAT133Y1 Y LEC 5101 6:00 - 9:00 BA 1160				
7:00					
8:00					

# Student Life

---



Bedford



Devonshire



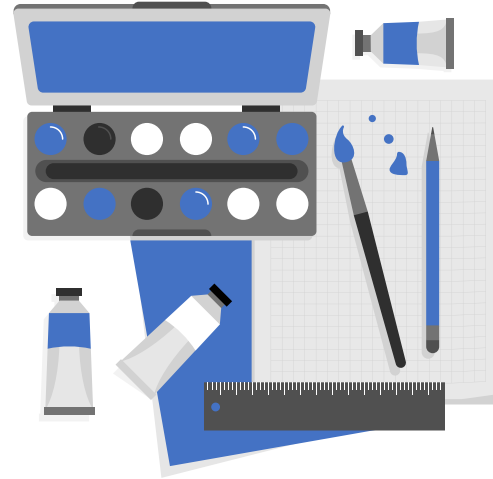
Galbraith



Harbord



Madison



## Student Groups

Rotman Commerce Student Association

Rotman Commerce Accounting Association

Rotman Commerce Finance Association

Rotman Commerce Management Association

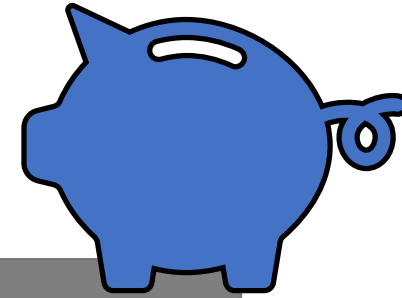
## FLC First-Year Learning Community

A pre-enrolled, co-curricular program comprised of 25 to 30 students. The program provides opportunity to meet classmates, develop academic skills, and form study groups and is led by upper-year peer mentors.





# Tuition and Fees



## Domestic Students – Year 1

Program Fees	\$6,100
Mandatory Incidental Fees	\$1,858
<b>Total Fees</b>	<b>\$7,958</b>

## Domestic Students – Year 2-4

Program Fees	\$15,900
Mandatory Incidental Fees	\$1,783
<b>Total Fees</b>	<b>\$17,683</b>

## International Students – Year 1

Program Fees	\$57,020
Mandatory Incidental Fees	\$2,043
<b>Total Fees</b>	<b>\$59,783</b>

## International Students – Year 2-4

Program Fees	\$64,810
Mandatory Incidental Fees	\$1,923
<b>Total Fees</b>	<b>\$67,453</b>



**\*Tip: take summer school at the end of your first year!**





Year 2-4

## Accounting Specialist

Year 1		Year 2		Year 3		Year 4	
Fall	Winter	Fall	Winter	Fall	Winter	Fall	Winter
RSM100H	RSM230H	RSM220H <sup>1</sup>	RSM221 <sup>1</sup>	RSM326H <sup>1</sup>	RSM320H <sup>1</sup>	RSM321H <sup>1</sup>	RSM420H <sup>1</sup>
RSM219H or RSM250H	RSM219H or RSM250H	RSM222H or RSM225H <sup>1</sup>	RSM225 <sup>1</sup> or RSM222	RSM324H <sup>1</sup>	RSM424H <sup>1</sup>	RSM333H	RSM422H <sup>1</sup>
ECO101H	ECO102H	ECO204Y		RSM332H	RSM323H <sup>1</sup>	ECO Elective <sup>2</sup>	RSM426H <sup>1</sup>
MAT133Y		ECO220Y		RSM260H or RSM270H	RSM392H	RSM or non-RSM Elective <sup>4</sup>	RSM or non-RSM Elective <sup>4</sup>
Non-RSM Elective <sup>3</sup>	Non-RSM Elective <sup>3</sup>	RSM260H or RSM270H	Non-RSM Elective <sup>3</sup>	Non-RSM Elective <sup>3</sup>	Non-RSM Elective <sup>3</sup>	Non-RSM Elective <sup>3</sup>	Non-RSM Elective <sup>3</sup>

RSM 222 Management Accounting I  
 RSM 260 Organizational Behaviour  
 RSM 270 Operations Management  
 RSM 332 Capital Market Theory  
 RSM 333 Introduction to Corporate Finance  
 RSM 392 Strategic Management

All specialist programs  
 require the same six  
 upper-year business  
 core courses

## Finance & Economics Specialist

Year 1		Year 2		Year 3		Year 4	
Fall	Winter	Fall	Winter	Fall	Winter	Fall	Winter
RSM100H	RSM230H	RSM222H	RSM260H or RSM270H <sup>2</sup>	ECO209Y <sup>1</sup>		RSM400 Required <sup>1</sup>	RSM400 Required <sup>1</sup>
RSM219H or RSM250H	RSM250H or RSM219H	ECO204Y		RSM392H	RSM400 Required <sup>1</sup>	RSM400 Required <sup>1</sup>	ECO 300+ Elective <sup>1</sup>
ECO101H	ECO102H	ECO220Y		ECO300+ Elective <sup>1</sup>	ECO 300+ Elective <sup>1</sup>	ECO300+ Elective <sup>1</sup>	ECO300+ Elective <sup>1</sup>
MAT133Y		RSM260H or RSM270H <sup>2</sup>	RSM332H	RSM333H or RSM336H <sup>1</sup>	RSM333H or RSM336H <sup>1</sup>	RSM or Non-RSM Elective <sup>4</sup>	RSM or Non-RSM Elective <sup>4</sup>
Non-RSM Elective <sup>2</sup>	Non-RSM Elective <sup>2</sup>	RSM or Non-RSM Elective <sup>4</sup>	RSM or Non-RSM Elective <sup>4</sup>	RSM Elective <sup>3</sup>	RSM or Non-RSM Elective <sup>4</sup>	RSM or Non-RSM Elective <sup>4</sup>	RSM or Non-RSM Elective <sup>4</sup>

# Management Focuses

- Finance
- Financial Statement Analysis
- International Business
- Leadership in Organizations
- Marketing
- Strategy and Innovation

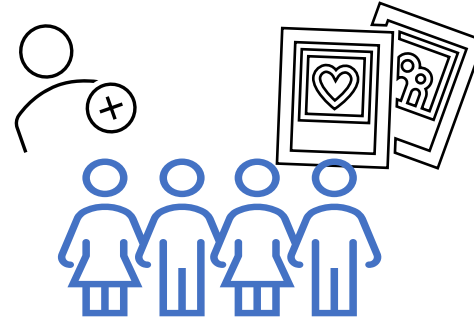
Management Specialist							
Year 1		Year 2		Year 3		Year 4	
Fall	Winter	Fall	Winter	Fall	Winter	Fall	Winter
RSM100H	RSM230H	RSM222H	RSM270H	RSM332H	RSM333H	RSM400 Elective <sup>1</sup>	RSM400 International Elective <sup>1</sup>
RSM219H or RSM250H	RSM250H or RSM219H	ECO204Y		RSM392H	RSM300+ Elective <sup>1</sup>	RSM or Non-RSM Elective <sup>5</sup>	RSM or Non-RSM Elective <sup>5</sup>
ECO101H	ECO102H	ECO220Y		RSM300+ Elective <sup>1</sup>	RSM300+ Elective <sup>1</sup>	RSM or Non-RSM Elective <sup>5</sup>	RSM or Non-RSM Elective <sup>5</sup>
MAT133Y		RSM260H	Non-RSM Elective <sup>4</sup>	ECO300 Elective <sup>2</sup>	ECO300 Elective <sup>2</sup>	RSM or Non-RSM Elective <sup>5</sup>	RSM or Non-RSM Elective <sup>5</sup>
Non-RSM Elective <sup>4</sup>	Non-RSM Elective <sup>4</sup>	Non-RSM Elective <sup>4</sup>	Non-RSM Elective <sup>4</sup>	Non-RSM Elective <sup>4</sup>	RSM Elective <sup>3</sup>	RSM or Non-RSM Elective <sup>5</sup>	RSM or Non-RSM Elective <sup>5</sup>

# Few Tips



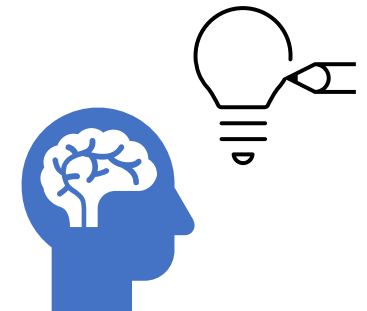
Exercise

Eat



Socialize

Critical Thinking





Q&A